

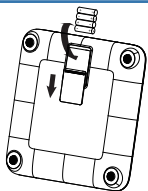
# Quick-Start Guide

LTE Weight Scale Plus



## Pylo 300-LTE

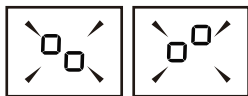
1



Insert four AA batteries into the the back of the scale.

Once inserted, the scale will perform an initial secure pairing with the mobile network.

2



Pairing in progress

The symbols  $\square$  and  $\square$  will display while the scale is pairing.

The secure pairing process normally takes around fifteen seconds, but may take up to two minutes.

3

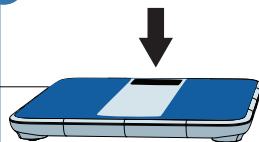


Secure Pairing Successful

The  $\square$  symbol will show once pairing is complete.

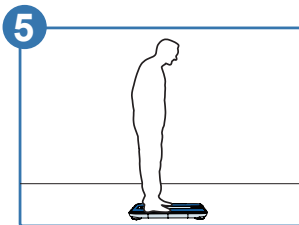
Your scale is now ready to use!

4

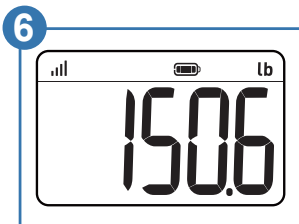


Lay the scale on a flat and hard surface such as tile, stone or hardwood.

Don't use the scale while it is wet or otherwise slippery.




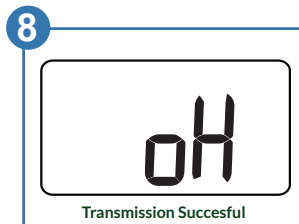
Step onto the scale and try to hold still while it calculates your weight. The display will flash a number once a measurement is locked in.




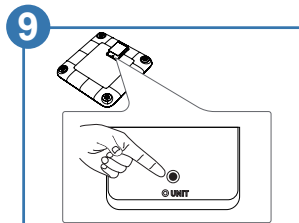
Once a measurement is locked in, the scale will save it and begin the data transmission process. You do not have to stay on the scale during data transmission.



During transmission, the scale display will flash the  icon to show it is connecting. Transmission normally takes around five seconds but can take up to a minute if signal is weak.



If transmission is successful, the  symbol is shown. If connection fails, an error (E1) is displayed. In this case, the measurement is saved and will be sent on the next successful connection.



If you would like to change the measurement unit, you can press the button in the battery compartment to cycle through pounds, kilograms or stones.

For more information, see the full instruction manual.

Pylo 